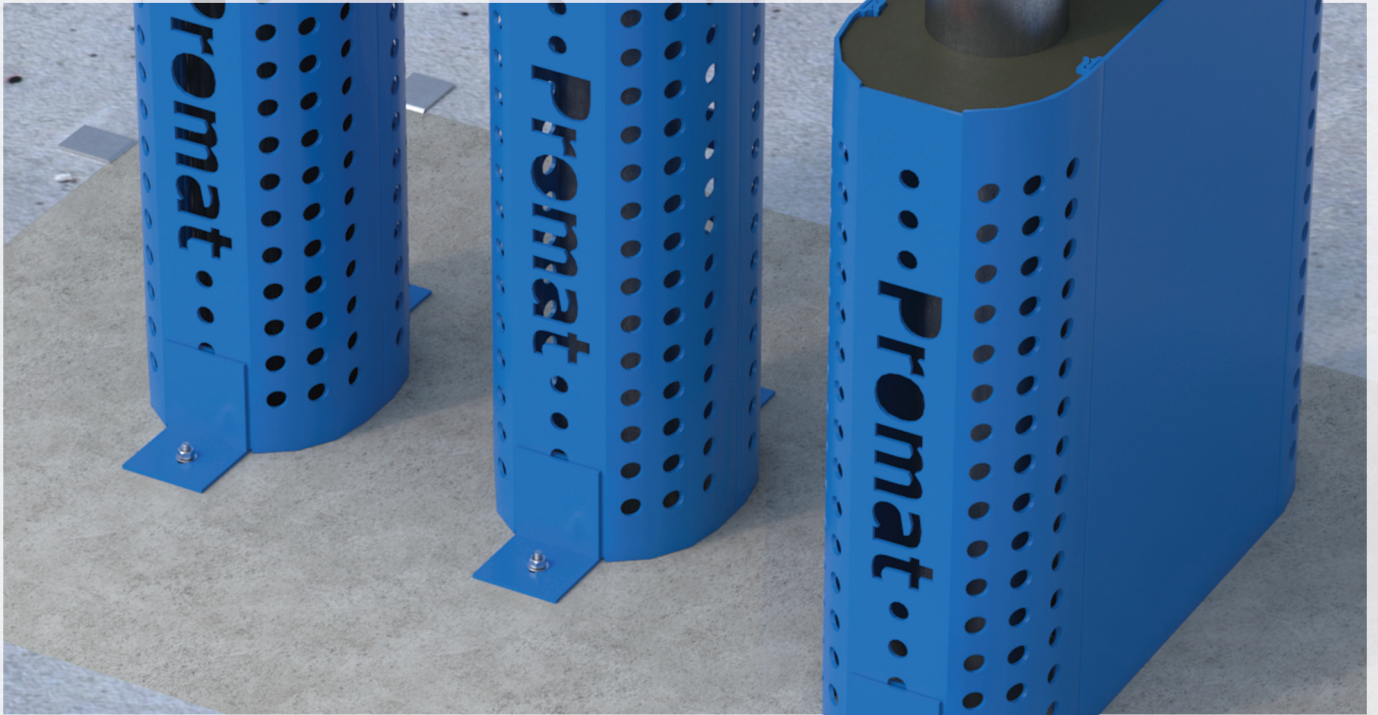


Promat

PROMASHIELD® Insulation For Service Penetrations



www.promat.com.au

NEW

INSULATION ON SERVICES MADE EASY

- Insulation criteria for service penetrations with no wrapping, strapping or taping
- Top side installation only
- Cutting-edge innovative fire protection technology
- A versatile unique retrofit design
- Guaranteed significant onsite time and cost savings
- System fully fire tested FRL -/120/120 to AS 1530: Part 4

The new PROMASHIELD® is an innovative solution that makes achieving the insulation criteria for service penetrations quick and easy with no more wrapping, strapping or taping required. The innovative retrofit design makes installation a breeze, the penetration can be finished in a fraction of the time it takes to treat services using current market offerings.

SIMPLE INSTALLATION

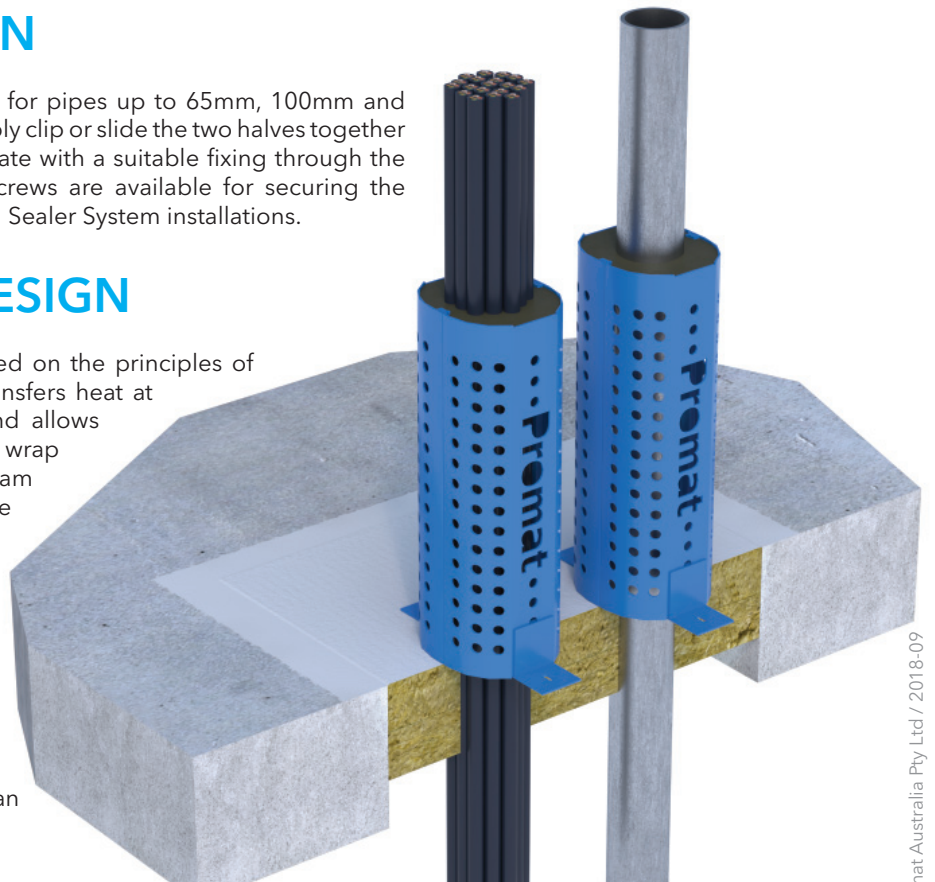
Available in small, medium and large sizes for pipes up to 65mm, 100mm and 200mm respectively. Installation is easy, simply clip or slide the two halves together around the pipe and secure into the substrate with a suitable fixing through the provided anchor points. Promat Pig Tail screws are available for securing the PROMASHIELD® to PROMASEAL® Bulkhead Sealer System installations.

SMART VERSATILE DESIGN

PROMASHIELD® is a patented system based on the principles of convection. This means that the service transfers heat at a lower rate than one that is wrapped and allows the PROMASHIELD® to be shorter than a wrap for the equivalent size service. The foam insert prevents waste accumulating inside the shield whilst also stabilising the shield around the service.

With the addition of extenders, this versatile system can be installed around rows of penetrating pipes or cable trays.

For service penetrations through a concrete slab, this system is only required on the top side of the opening to achieve an FRL of -/120/120.



© Promat Australia Pty Ltd / 2018-09

Promat provides a wide range of systems for compartmentation, fire resistant air and cable ducts, structural steel protection, fire stopping and partitions. For assistance with any passive fire protection problems, please consult Promat.

NEW

Promat Australia Pty Ltd

T 1800 PROMAT (776 628) E mail@promat.com.au
F (08) 8352 1014 (Head office) (02) 9630 0258 (New South Wales)
1800 334 598 (Victoria / Queensland)



www.promat.com.au