

Promat

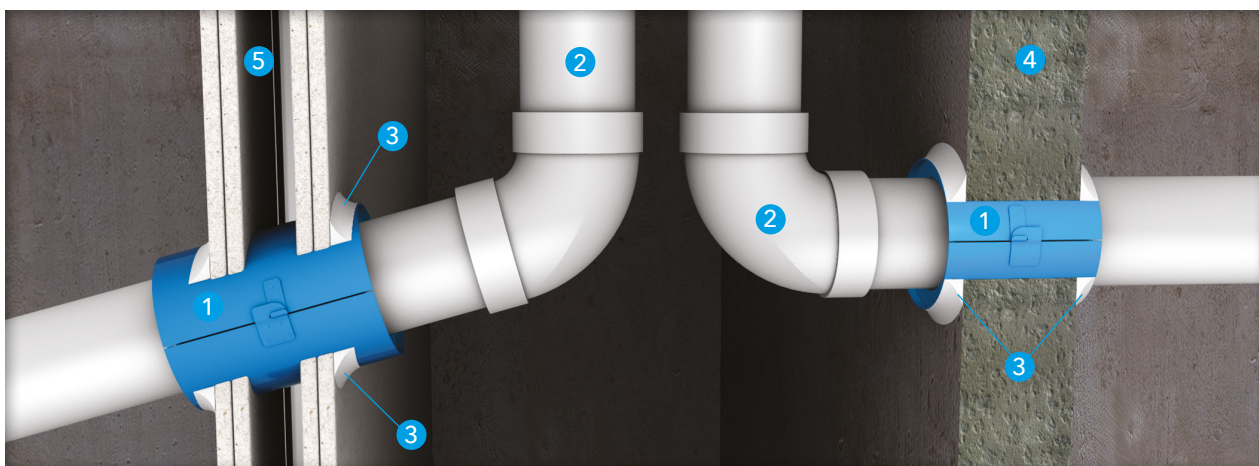


PASSIVE FIRE PROTECTION SYSTEM

PROMASEAL® Wall Collar

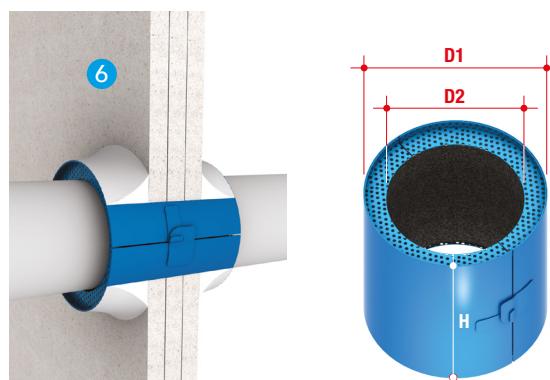


PROMASEAL® Wall Collar



Up to -/120/120 fire resistance in accordance with the requirements of AS 1530: Part 4: 2014 and AS 4072: Part 1: 2005; insulation criteria will vary depending on type and size of plastic pipes AND the type of penetrating elements

- 1 PROMASEAL® Wall Collar
- 2 Various plastic piping, e.g. HDPE, uPVC
- 3 All gaps caulked with PROMASEAL®-A Acrylic Sealant to achieve the required fire resistance performance
- 4 Fire resistant concrete/masonry walls
- 5 Fire resistant steel/timber framed lightweight partitions
- 6 Hebel and three layers of 16mm thick plasterboard wall



* Additional allowance of 3mm for clip

Dimensions

Code no.			FCW 40	FCW 50
Pipe nominal diameter	mm		40	50
Body	H	mm	120	120
	D1	mm	80*	90*
	D2	mm	47	60

Code no.			FCW 65	FCW 100	FCW 150
Pipe nominal diameter	mm		65	100	150
Body	H	mm	120	120	120
	D1	mm	107*	153*	203*
	D2	mm	75	116	164

If the partition/wall is thinner than 128mm, PROMASEAL®-A Acrylic Sealant may need to be applied to the section of collar that extends from the partition/wall in order to maintain 120 minutes insulation.

PROMASEAL® Wall Collar can be positioned at an angle providing the exposure is the similar to the original test. Multiple collars can be used for thicker walls, please consult Promat for details of the application requirements.

PROMASEAL® Wall Collar is designed for insertion into wall elements made of plasterboard, concrete or masonry. The collar has been tested up to 120 minute fire resistance with HDPE, PPR or uPVC pipes and general building services up to 162mm outside diameter through these wall elements (with an equal or greater fire resistance level) in accordance with the criteria of AS 1530: Part 4: 2014 and AS 4072: Part 1: 2005. Similar to PROMASEAL® Retrofit Collar, this is a split type collar for retrofit where necessary.

Promat

Australia

Promat Australia Pty Ltd

South Australia office

1 Scotland Road
SA 5031 Mile End South
☎ 1800 Promat (776 628)
☎ +61 8 8352 1014
✉ PAPT.mail@etexgroup.com

New South Wales office

Unit 1, 175 Briens Road
Northmead, NSW 2152
☎ 1800 Promat (776 628)
☎ +61 2 9630 0258
✉ PAPT.mail@etexgroup.com

Victoria office

Unit 1, 355 Grieve Parade
Altona North, VIC 3025
☎ 1800 Promat (776 628)
☎ 1800 334 598
✉ PAPT.mail@etexgroup.com

Queensland office

80 Stradbroke St
Heathwood QLD 4110
☎ 1800 011 376
☎ 1800 334 598
✉ PAPT.mail@etexgroup.com

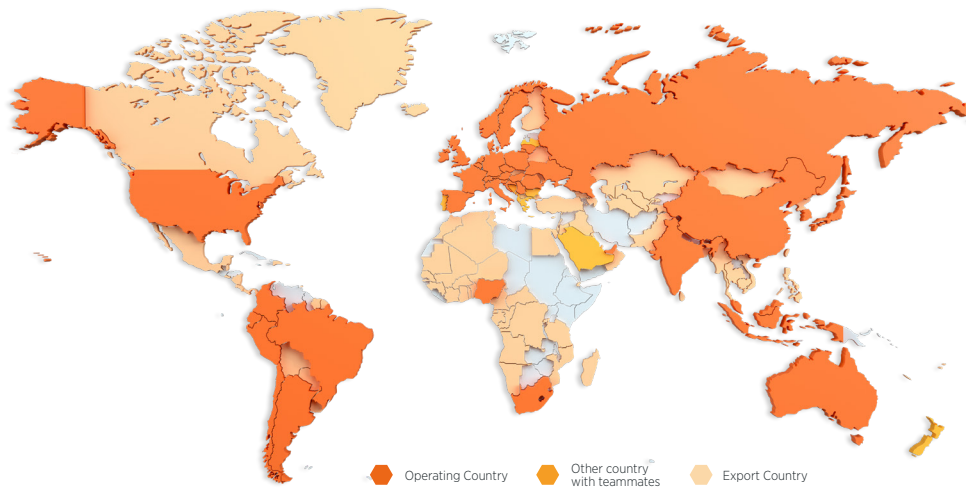


www.promat.com



Promat Asia Pacific

- The technical data provided in this publication is based on mean values prevalent at time of publication and is thus subject to fluctuation. It should not be regarded as a guarantee to system performance.
- All data contained herein conforms to and frequently surpasses generally accepted fire protection standards recognised by most professional fire science practitioners and regulatory authorities worldwide. The same general principle is equally applicable to all Promat products and systems. Promat has access to a considerable body of test authentication data and this can be provided on a complimentary basis upon request. It should be noted however that this publication replaces all previous editions in its entirety.



About Etex

Etex is a global building material manufacturer and pioneer in lightweight construction. Etex wants to inspire people around the world to build living spaces that are ever more safe, sustainable, smart and beautiful.

Founded in 1905, headquartered in Zaventem, Belgium, Etex is a family-owned company with more than 13,500 employees globally. It operates more than 160 sites in 45 countries and recorded a revenue of EUR 3.7 billion in 2022. Etex fosters a collaborative and caring culture, a pioneering spirit and a passion to always do better for its customers.

Etex has five R&D centres supporting five global divisions:

- Building Performance: dry construction solutions including plasterboards and fibre cement boards, plasters and formulated products, passive fire protection and associated products.
- Exteriors: a range of aesthetic fibre cement materials for use in agriculture, architectural and residential exteriors.
- Industry: fire protection and high-performance insulation products for the construction and OEM (Original Equipment Manufacturer) industries.
- Insulation: glass mineral wool and extruded polystyrene (XPS) for thermal and acoustic insulation.
- New Ways: high-tech offsite modular solutions based on wood and steel framing.

Etex's global portfolio includes leading commercial brands such as Promat, Kalsi, Siniat, Equitone, Eternit, Cedral, Durlock, Gyplac, Pladur, Superboard and URSA.

Etex is Inspiring Ways of Living, for more information, please visit our website: www.etexgroup.com