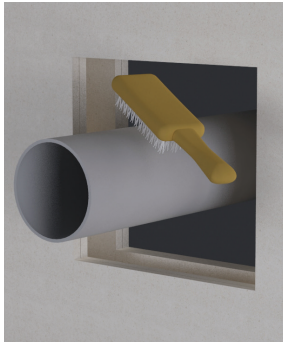


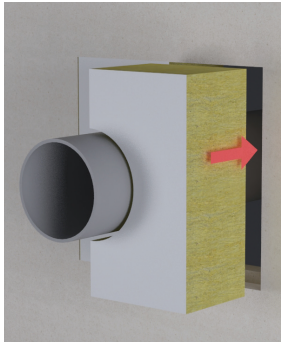
## Installation Method

# PipeBloc® EL

## Fire Resistance Pipe Wrap on a Roll



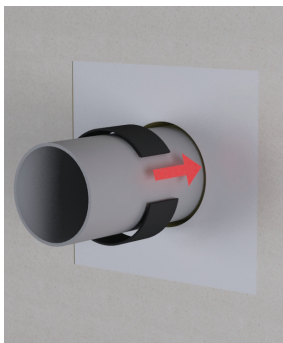
1. Clean opening



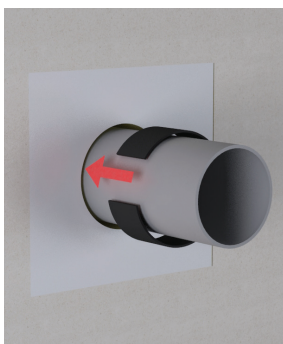
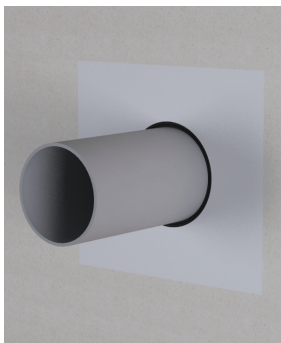
2. Fill the opening



3. Wrap PipeBloc® EL and apply sealant



4. Wrap PipeBloc® EL on one side of the wall



5. Wrap PipeBloc® EL on one other side of the wall

FSi Ltd. recommend installation of FSi Ltd. products is carried out by 3rd party certified installers.

Adequate space and accessibility should be provided for cutting and shaping the batts, applying and tooling the sealant.

Simple tools and equipment may be required, depending on your aperture:

- Tape measure • Cartridge gun • Marker or pencil • Straight edge • Masking tape • All purpose saw • Pad saw • Pallet knife or pointing trowel • Drill or screw driver

1. Clean substrate and service ensuring they are clean, dry, sound and homogeneous, free from oils, grease, dust and loose particles. The product does not require a primer on most common surfaces.
2. For larger openings, the aperture will need to be filled with Stopseal Batt at the same time as PipeBloc® EL is installed. See TDS001 for installation and UL-EU-01023-CPR for tested systems.
3. For smaller openings / annular space apply Pyrocoustic® Sealant at 5mm depth after wrap is installed. Use pointing tool to smooth off.
4. Peel of self adhesive strip. Start to wrap PipeBloc® EL around the service ensuring enough layers in line with scope of test data, use self-adhesive to secure. Push into aperture or in line with aperture.
5. Apply the second PipeBloc® EL to the other side of the wall. Floor systems require PipeBloc® EL from both sides of floor and can be fitted centrally but ensure correct layers are applied as the two systems differ in layers.

Clean all tools and application equipment with water immediately after use.

Competence records should be kept for all Individuals installing this product(s). Installations should be suitably recorded and logged.