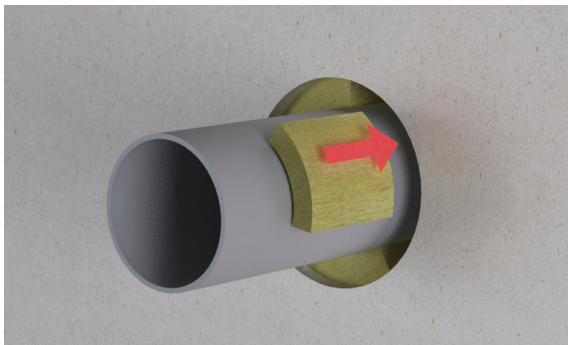


## Installation Method



1. Clean opening



2. Insert backing material



3. Applying sealant



4. Smooth sealant

## PyroPro HPE® Sealant

### Fire Resistance Intumescent Sealant

FSi Ltd. recommend installation of FSi Ltd. products is carried out by 3rd party certified installers.

1. The substrate must be clean, dry, sound and homogeneous, free from oils, grease, dust and loose particles. The product does not require a primer on most common surfaces, although adhesion tests are recommended prior to full scale application.
2. Adequate space and accessibility should be provided for applying and tooling the sealant. A suitable backing material to control the sealant depth, in many cases will be required, please refer to tested systems (UL-EU 00770).

The substrate depth should be such as to provide a minimum sealant depth required as per tested systems (UL-EU 00770).

3. The sealant should be gunned firmly into the aperture ensuring that it is in full contact with the sides of the aperture and service. Failure to carry this out may result in poor adhesion or incorrect volume of the sealant and ultimate failure of the system.
4. Tooling of the sealant may be necessary to achieve an acceptable appearance. This is accomplished by drawing a flat tool over the surface of the sealant to produce a smooth neat finish. Tooling also compresses the sealant into the aperture enhancing the adhesion to the joint sides.

Clean all tools and application equipment with water immediately after use.

Competence records should be kept for all Individuals installing this product(s). Installations should be suitably recorded and logged.