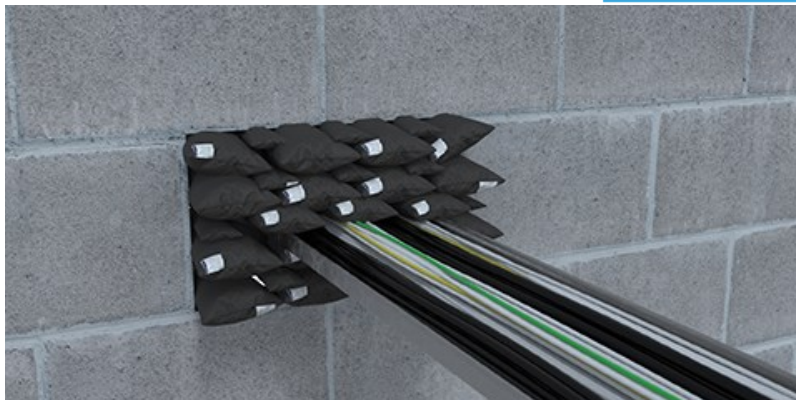


S-Line® Pillows

Fire Resistance Bags



General description

S-Line® Pillow are a fire resistant penetration sealing system used to create a temporary or permanent fire barrier around single or multi-service penetrations to prevent the passage of fire through a compartment wall or floor, especially suitable where services are continuously being changed or replaced.

Packaging

Pieces per box:

- Sausage - 50
- Small - 25
- Large - 12

Application and use

- To reinstate fire resistance through rigid walls and floors
- Assumed working life 30 years
- Fire Stopping within steel cable trunking
- For internal use

Product Details

Material	Glass cloth bag with organic fillers and intumescent additives
Finish / Colour	Grey
Unit of measure	Sausage - 330mm x 50mm x 20mm. ~ 77g. Small - 330mm x 200mm x 25mm. ~ 300g. Large - 330mm x 200mm x 45mm. ~ 490g.
Chemical properties/ COSHH statement	See SDS latest version is available at www.promat.com/en-gb or available on request from technical.fsi.uk@etexgroup.com
Size/dimensions (product & installation spacial requirement)	For penetrations seals, opening size and penetration service covered as per requirements of UL-EU-00640-CPR
Shelf life	N/A
Working Life	10 Years (ETA-20/1031)

Product Certification / Approvals

Approval	Reference number
ETA	ETA-20/1031
CE Mark	2531-CPR-CX010257
UL-EU	UL-EU-00640-CPR
UKCA	0843-CPR-1144

Memberships

ASFP
BASA

Testing / Classification

Standard	Description	Result
BS EN 1366-3	Fire resistance tests for service installations. Penetration seals	See UL-EU-00640-CPR for fire resistance performance
BS 476 : Parts 20 and 22	Fire tests on building materials and structures. Method for determination of the fire resistance of non-loadbearing elements of construction	Contact technical.fsi.uk@etexgroup.com for details
BS EN 1026:2000	Windows and doors. Air permeability. Test method	Tested at 600 Pa (contact technical.fsi.uk@etexgroup.com for details)
BS EN 13501-2	Fire classification of construction products and building elements	See UL-EU-00640-CPR for fire resistance performance
BS EN ISO 10140-2:2020	Laboratory measurement of sound insulation of building elements. Measurement of airborne sound insulation	Up to 43dB achievable contact technical.fsi.uk@etexgroup.com for details
BS EN ISO 10140-2:2010	Acoustic performance	Please contact FSi Promat technical for details

Installation & Operation

FSi Ltd. recommend installation of FSi Ltd. products is carried out by 3rd party certified installers.

The substrate must be clean, dry, sound and homogeneous, free from oils, grease, dust and loose particles. The product does not require a primer on most common surfaces, although adhesion tests are recommended prior to full scale application.

The installer must ensure the maximum aperture size is not exceeded as outlined in UL-EU-00640-CPR.

The installer must ensure the appropriate size S-Line® Pillow is selected to ensure all gaps are filled and S-Line® Pillows are installed under compression as outlined in UL-EU-00640-CPR. The installer must ensure that all services are within the scope of application for S-Line® Pillows as outlined in UL-EU-00640-CPR. Install the S-Line® Pillows in such a way that all joints are staggered in each layer until you have filled all gaps within the wall or floor.

Pack pillows tightly into the opening around the services. Always ensure that all voids are completely filled and S-Line® Pillows are installed in a manner that ensures a tight compression fit.

Walls - S-Line® Pillows must be installed centrally within the fire line so as they overlap both sides of the wall.

Floors - Steel mesh (50mm square with 5mm wire) is mechanically fixed with suitable non-combustible fixings to the soffit of the floor or within the reveal of the aperture via vertical returns at the edges of the mesh. The S-Line® Pillows are tightly packed into the opening and around the services.

Where S-Line® Pillows are removed to allow for the retrospective positioning of services, the installer must ensure the system is appropriately reinstated to ensure no gaps are present.

Competence records should be kept for all individuals installing this product(s). Installations should be suitably recorded and logged.

Maintenance

Recorded inspection should be conducted in line with the maintenance and inspection schedule defined for the building/project.

These inspections should be completed and recorded by suitably competent individuals at intervals outlined in the operation and maintenance manual relevant to the building.

Ensure Safe Access and Egress when carrying out maintenance or inspection.

Where product(s) is damaged or tampered, new product should be installed in line with installation guidance.

Handling & Storage

Store in a well-ventilated, dry, cool environment. Recommended temp ranges +5°C - +35°C. Protect against exposure to direct sunlight. Always ensure that safe manual handling procedures are followed at all times.

For information and advice on the safe handling, storage and disposal of chemical products, please refer to the most recent Safety Data Sheet (SDS) available at www.promat.com/en-gb

Disposal

The S-Line® Pillow is considered a complex article. However, the individual components cannot be easily separated.

European Waste Catalogue code: **17 09 04**

(CONSTRUCTION AND DEMOLITION WASTES (INCLUDING EXCAVATED SOIL FROM CONTAMINATED SITES); other construction and demolition wastes; mixed construction and demolition wastes other than those mentioned in 17 09 01, 17 09 02 and 17 09 03).

Disposal of the S-Line® Pillow must be done according to official regulations and in accordance with a licensed collector's sorting instructions.

You must classify your own waste, the information given above is guidance only. Waste must be classified on a case-by-case basis.

Legal Notes

FSi Ltd. products are manufactured to rigid standards of quality. Any product which has been applied in accordance with FSi Ltd.'s written instructions and in any application recommended by FSi Ltd., but which is proved to be defective in product quality, will be replaced free of charge. No liability can be accepted for the information provided in this document although it is published in good faith and believed to be correct at time of issue. Any drawings provided are for illustrative purposes only. FSi Ltd. reserves the right to alter product specifications without prior notice, in line with our Company policy of continuous development and improvement. Changes due to new findings are possible, errors and misprints are not excluded. No liability whatsoever will be accepted for any loss, damage or injury arising from the use of the information given. FSi Ltd. have no control over the methods of installation, competence of operatives or suitability of site conditions, no warranties, expressed or implied, are intended to be given as to the actual performance of the product/ system mentioned within this document.

SKU CODES

Item Code	Description	Size	Box Qty
S100FP	S-Line® Pillows	Sausage - 330 x 50 x 20mm	50
S250FP	S-Line® Pillows	Small - 330 x 200 x 25mm	25
S800FP	S-Line® Pillows	Large - 330 x 200 x 45mm	12

FSi Limited

Westminster Industrial Estate
Tamworth Road
Measham
DE12 7DS
Tel: +44 (0)1530 515130
Email: technical.fsi.uk@etexgroup.com
Web: www.promat.com/en-gb