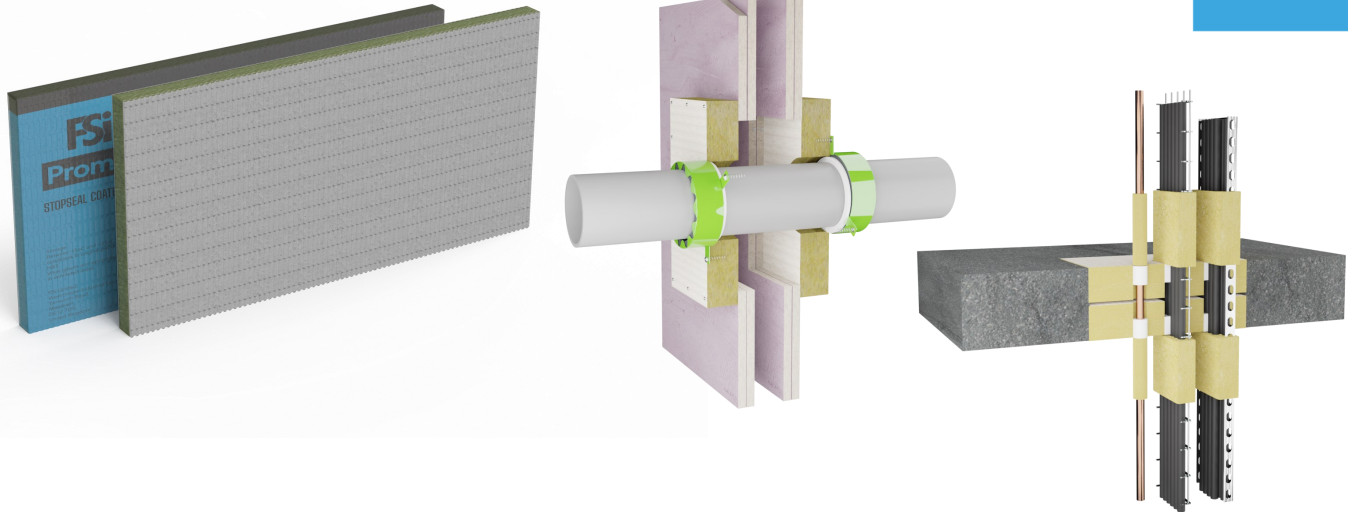


Stopseal® Batt

Fire Resistant Coated Protection Board



General description

Stopseal Batt is a mineral wool based protection board coated with a fire resistant, ablative coating on both sides. It can be combined with many other FSi Promat passive fire protection products for sealing a wide range of installation service penetrations.

Packaging

- Individually bagged with protective packaging

Application and use

- To reinstate fire resistance through walls and floors
- Multi-service penetrations
- For internal use
- Shelf Life - N/A

Product Details

Material	Mineral wool core coated both sides with a fire resistant ablative coating
Weight	~6.5kg
Finish / Colour	White
Packaging	Individually bagged with protective packaging
Pack Size / Unit of Measure	1200 x 600 x 50mm
Chemical properties/ COSHH statement	See SDS latest version is available at www.fsilttd.com or available on request from technical.fsi.uk@etexgroup.com
Size/dimensions (product & installation spacial requirement)	For penetrations seals, opening size and penetration service covered as per requirements of UL-EU-00771-CPR
Working Life	25 Year (ETA-20/1026)
Dry film thickness of Coating	≤0.7mm
Density	140kg/m ³
Thermal Conductivity	0.035 W/mK
Assumed Working Like	25 Year (ETA20/1026)

Technical Data Sheet

Product Certification / Approvals

Approval	Reference number
ETA	ETA-20/1026
CE Mark	2531-CPR-CX010255
UL-EU	UL-EU-00771-CPR
UKCA	0843-CPR-1149

Testing / Classification

Standard	Description	Result
BS EN 1366-3:2009	Fire resistance tests for service installations. Penetration seals	See UL-EU-00771-CPR for fire resistance performance
BS 476 : Parts 20 and 22	Fire tests on building materials and structures. Method for determination of the fire resistance of non-loadbearing elements of construction	Contact technical.fsi.uk@etexgroup.com for details
BS EN 1026:2000	Windows and doors. Air permeability. Test method	Tested at 600 Pa (contact technical.fsi.uk@etexgroup.com for details)
ASTM E84	Standard Test Method for Surface Burning Characteristics of Building Materials	Contact technical.fsi.uk@etexgroup.com for details
ASTM E2923:14	Longevity of Fire Stop Materials	30 years
BS EN 13501-2	Fire classification of construction products and building elements	See UL-EU-00771-CPR for fire resistance performance
LEED 4.1 NC-2009	IEQc4.1 Low-Emitting Materials—Adhesives and Sealants	Contact technical.fsi.uk@etexgroup.com for details
BS EN ISO 10140-2:2020	Laboratory measurement of sound insulation of building elements. Measurement of airborne sound insulation	Up to 60dB achievable. Contact technical.fsi.uk@etexgroup.com for details
AS1530.4:2014	Methods for fire tests on building materials, components and structures Fire-resistance tests for elements of construction	Contact technical.fsi.uk@etexgroup.com for details
BS EN 13501-1	Fire classification of construction products and building elements. Classification using data from reaction to fire tests	Contact technical.fsi.uk@etexgroup.com for details
BS EN ISO 10140-2:2010	Acoustic performance	Please contact FSi Promat technical for details

Technical Data Sheet

Installation & Operation

FSi Ltd. recommend installation of FSi Ltd. products is carried out by 3rd party certified installers.

Adequate space and accessibility should be provided for cutting and shaping the batts, applying and tooling the sealant.

The substrate must be clean, dry, sound and homogeneous, free from oils, grease, dust and loose particles. The product does not require a primer on most common surfaces.

Simple tools and equipment are required:

- Tape measure
- Cartridge gun
- Marker or pencil
- Straight edge
- Masking tape
- All purpose saw
- Pad saw
- Pallet knife or pointing trowel

Friction Fit

Measure the size of the opening, relevant position and size of the services. Tape all surfaces where necessary to ensure the aesthetics of Pyrocoustic Sealant. Draw these details onto the Stopseal Batt and cut out using a saw or knife.

Using a trowel or pallet knife apply a thick layer of Pyrocoustic Sealant to all areas of contact around the opening and services (where Pyropro HPE is to be installed around the service Pyrocoustic Sealant should not be applied here). Apply a similar thickness of Pyrocoustic Sealant

to the cut Stopseal Batt. Fit the cut Stopseal Batt into the opening, ensuring a tight friction fit. Push the Stopseal Batt firmly into the opening using the flat of the hand.

Continue the above procedure to fill the opening ensuring that a layer of Pyrocoustic Sealant is applied to all areas of contact between the boards. The seal should be made up from as few pieces of Stopseal Batt as practicable. Any small gaps in the seal left when all cut pieces have been installed should be tightly packed with off-cuts and coated with Pyrocoustic Sealant.

A layer of Pyrocoustic Sealant should be applied to all joint lines formed by piecing the seal together. To complete the installation a small bead of Pyrocoustic Sealant should be applied around the extremities of the opening and services. The bead of Pyrocoustic Sealant should be smoothed to overlap the wall / floor surface by approximately 5mm. Remove any masking and dispose of waste materials.

Pattern Fit (Face fit)

Measure the size of the opening, relevant position and size of the services. Tape all surfaces where necessary to ensure the aesthetics of Pyrocoustic Sealant. Cut the Stopseal Batt larger than opening so that an overlap on to substrate can be achieved in line with UL-EU-00771-CPR. Draw penetration service details onto the Stopseal Batt and cut out using a saw or knife.

Using a trowel or pallet knife apply a thick layer of Pyrocoustic Sealant to all areas of contact around the opening and services (where Pyropro HPE is to be installed around the service Pyrocoustic Sealant should not be applied here). Apply a similar thickness of Pyrocoustic Sealant to the cut Stopseal Batt.

Position the Batt over the aperture ensuring required overlap is achieved and mechanically fix to substrate using suitable and tested fixings at prescribed maximum centres, outlined in UL-EU-00771-CPR.

Continue the above procedure to fill the opening ensuring that a layer of Pyrocoustic Sealant is applied to all areas of contact between the boards. The seal should be made up from as few pieces of Stopseal Batt as practicable. Any small gaps in the seal left when all cut pieces have been installed should be tightly packed with off-cuts and coated with Pyrocoustic Sealant.

A layer of Pyrocoustic Sealant should be applied to all joint lines formed by piecing the seal together. To complete the installation a small bead of Pyrocoustic Sealant should be applied around the extremities of the opening and services. The bead of Pyrocoustic Sealant or PS Coating should be applied to exposed mineral wool edges and overlap the wall / floor surface

by approximately 5mm. Remove any masking and dispose of waste materials.

Where services penetrations are present such as pipes and cables the appropriate system should be installed shown in UL-EU-00771-CPR. Combustible services will require a closure device such as PipeBloc PCP, PipeBloc EL and Pyropro HPE.

Clean all tools and application equipment with water immediately after use.

Competence records should be kept for all individuals installing this product(s). Installations should be suitably recorded and logged.

Maintenance

Recorded inspection should be conducted in line with the maintenance and inspection schedule defined for the building/project.

These inspections should be completed and recorded by suitably competent individuals at intervals outlined in the operation and maintenance manual relevant to the building.

Ensure Safe Access and Egress when carrying out maintenance or inspection

Where product(s) is damaged or tampered, new product should be installed in line with installation guidance.

Technical Data Sheet

Handling & Storage

For unopened material, store in a well-ventilated, dry, cool environment. Recommended temp ranges +5°C - +40°C. Protect against exposure to direct sunlight. Always ensure that safe manual handling procedures are followed at all times. When removing Batt from packaging for installation, ensure 2 coated Batt surfaces do not come into contact otherwise this may cause the coated surfaces to adhere to each other and deface the coating.

For information and advice on the safe handling, storage and disposal of chemical products, please refer to the most recent Safety Data Sheet (SDS) available at www.promat.com/en-gb

Disposal

Removal and disposal must be done in a way that limits, as much as possible, the formation of dust. Adequate PPE must be worn including suitable respiratory equipment in the case of insufficient ventilation. European Waste Catalogue code: 17 06 04 (insulation materials other than those mentioned in 17 06 01 and 17 06 03) Dispose of waste according to applicable legislation. Handle contaminated packages in the same way as the substance itself. Non-

contaminated packages may be recycled. Please see SDS for further information.

Legal Notes

FSi Ltd. products are manufactured to rigid standards of quality. Any product which has been applied in accordance with FSi Ltd.'s written instructions and in any application recommended by FSi Ltd., but which is proved to be defective in product quality, will be replaced free of charge. No liability can be accepted for the information provided in this document although it is published in good faith and believed to be correct at time of issue. Any drawings provided are for illustrative purposes only. FSi Ltd. reserves the right to alter product specifications without prior notice, in line with our Company policy of continuous development and improvement. Changes due to new findings are possible, errors and misprints are not excluded. No liability whatsoever will be accepted for any loss, damage or injury arising from the use of the information given. FSi Ltd. have no control over the methods of installation, competence of operatives or suitability of site conditions, no warranties, expressed or implied, are intended to be given as to the actual performance of the product/system mentioned within this document.

SKU CODES

Item code	Description	Size	Colour	Box Qty
FB1250FP	Stopseal® Batt	1200 x 600 x 50mm	White	1
T1200D	Stopseal® Batt	1200 x 600 x 60mm	White	1

FSi Limited

Westminster Industrial Estate
Tamworth Road
Measham
DE12 7DS
Tel: +44 (0)1530 515130
Email: technical.fsi.uk@etexgroup.com
Web: www.promat.com/en-gb