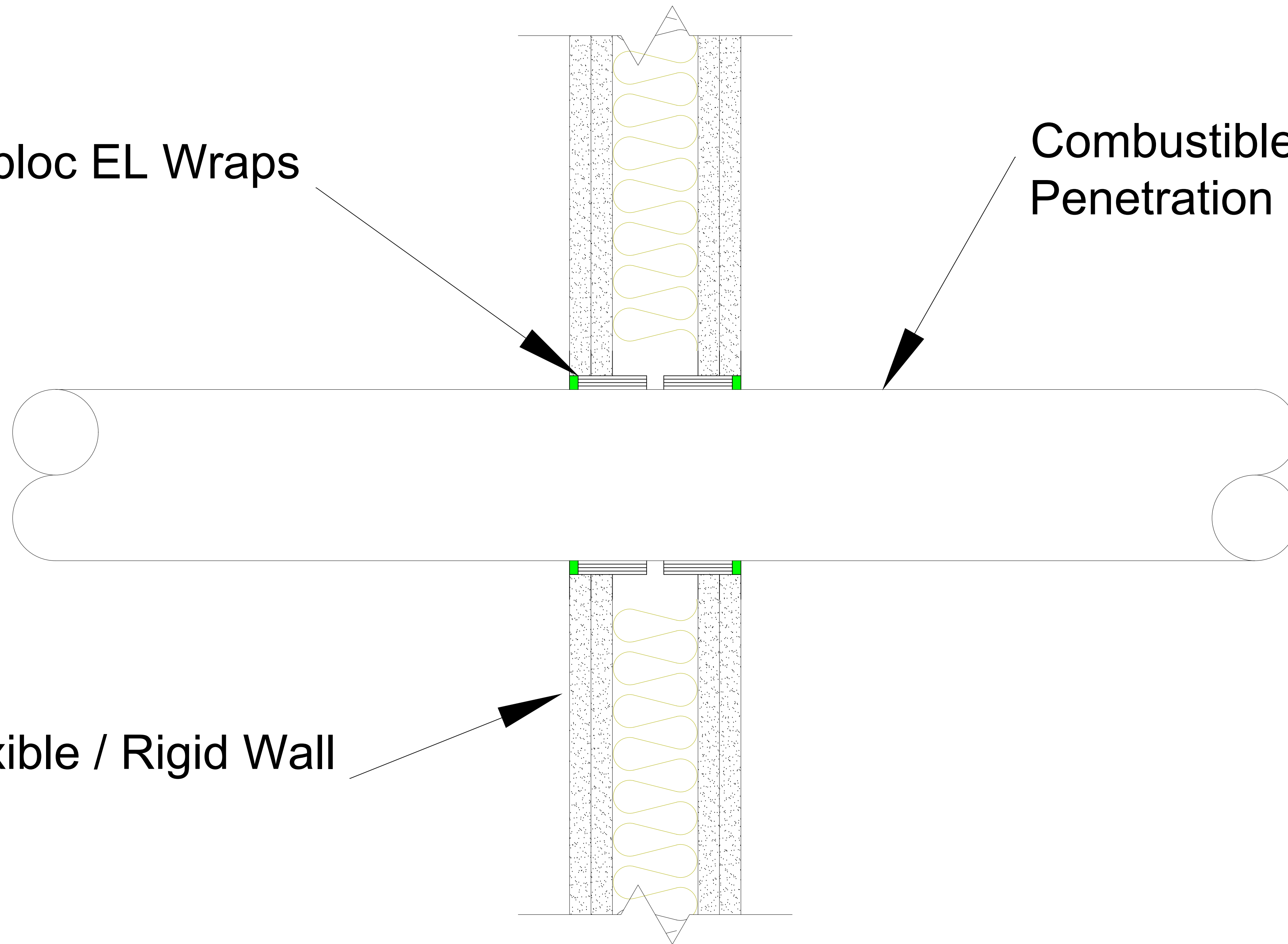


Pipebloc EL Wraps

Combustible Penetration

Flexible / Rigid Wall



**Technical Details**

Supporting Test Data: 427180B  
 Test Standard: EN 1366-3:2021

**Fire Resistance Performance:**

|   |                     |
|---|---------------------|
| PVC-U, PVC-C Penetrations up to 200mm     | EI 90 U/C, C/C      |
| PE, ABS, SAN-PVC Penetrations up to 125mm | EI 120 U/C, C/C     |
| PE, ABS, SAN-PVC Penetrations up to 200mm | EI 90 U/C, C/C      |
| PP Penetrations up to 125mm               | E120, EI90 U/C, C/C |
| PP Penetrations up to 200mm               | EI 90 U/C, C/C      |

**Capping**

- U/C, C/C

**Supporting Construction:**

Flexible walls ≥ 100 mm, Insulated openings, Lined / Unlined

*\*The supporting construction must meet the fire resistance requirement of the proposed firestopping detail. Supporting construction must be installed and apertures formed in line with manufacturer's guidance*

**Service Supports:**

< 400mm

*\*Service supports must be appropriately fire resistant*

**Installation:**

FSi Ltd. recommend installation of FSi Ltd. products is carried out by 3rd party certified installers.  
 The substrate must be clean, dry, sound and homogeneous, free from oils, grease, dust and loose particles.

For larger openings, the aperture will need to be filled with Stopseal Batt at the same time as Pipebloc EL is installed. See TDS001 for installation and UL-EU-01023-CPR for tested systems.

For smaller openings / annular space apply Pyrocoustic Sealant at 5mm depth after wrap is installed. Use pointing tool to smooth off

Peel of self adhesive strip. Start to wrap Pipebloc EL around the service ensuring enough layers in line with scope of test data, use self-adhesive to secure. Push into aperture or in line with aperture.

Apply the second Pipebloc EL to the other side of the wall. Floor systems require Pipebloc EL from both sides of floor and can be fitted centrally but ensure correct layers are applied as the two systems differ in layers

**Minimum Separation Between Penetration Services:**

- 0mm

**Angles**

Pipes tested perpendicular to the supporting construction are allowed at all angles between 90° and 45° in all directions.

| Issue No. | Drawing Reference | Date       |
|-----------|-------------------|------------|
| 02        | EL-015            | 21/11/2024 |

**TESTED DETAIL**

Drawing Title:  
 Pipebloc EL® System Installed to a Combustible Pipe in a Flexible Wall

Scale : NTS

Drawn by : FSi Limited



FSi Promat Limited  
 Westminster Industrial Estate  
 Tamworth Road  
 Measham  
 Leicestershire  
 DE12 7DS

FSi Ltd. products are manufactured to rigid standards of quality. No liability can be accepted for the information provided in this document although it is published in good faith and believed to be correct at time of issue. Any drawings provided are for illustrative purposes only. FSi Ltd. reserves the right to alter product specifications without prior notice, in line with our Company policy of continuous development and improvement. Changes due to new findings are possible, errors and misprints are not excluded. No liability whatsoever will be accepted for any loss, damage or injury arising from the use of the information given. FSi Ltd. have no control over the methods of installation, competence of operatives or suitability of site condition. No warranties, expressed or implied, are intended to be given as to the actual performance of the product/system mentioned within this document.