

Technical Details

Supporting Test Data:

Test Standard: EN1366-4

Fire Resistance Performance:

Product Depth	Fire Resistance
75mm	EI30
100mm	EI60
120mm	EI120

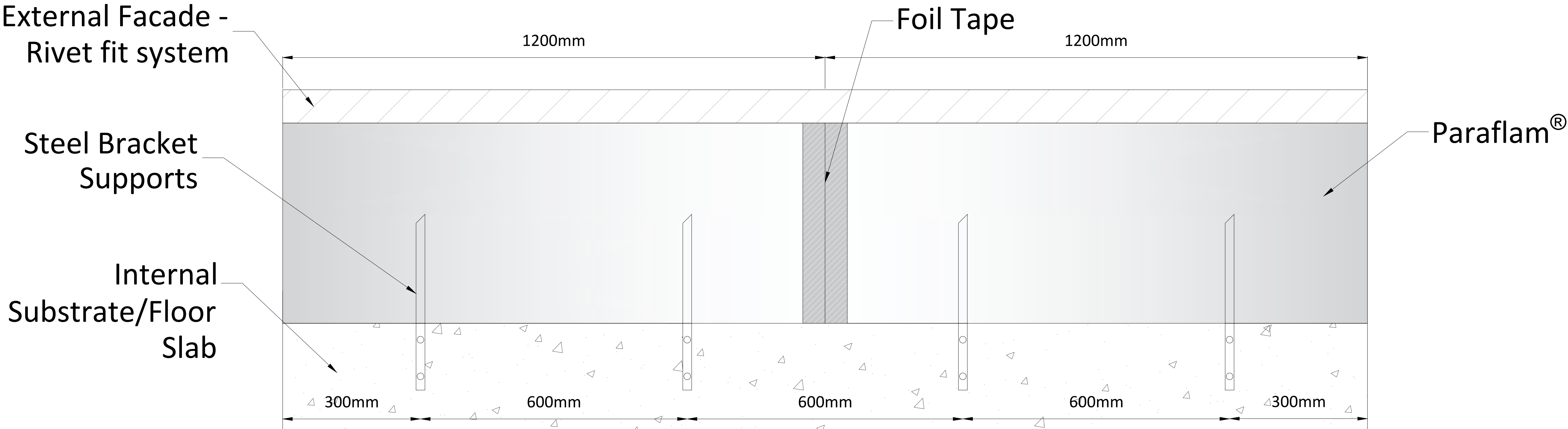
Void Size

- ≤ 450mm

Installation:

All substrates clean and free from loose or flaking material.

Paraflam® can be supplied in either pre-cut lengths or in sheet form to be cut on site. The size of the cut should accommodate the size of the opening and a minimum compression of 5-10mm. Where brackets are required Paraflam® must be supported at the correct distances and number of brackets as indicated in the information in this document. The steel support brackets are to be mechanically fixed to the substrate with suitable fire resistant anchors. Lengths in excess of 600mm will require minimum 2 brackets. Joints between each length of Paraflam® shall be a straight joint, ensuring a tight fit. Self adhesive foil tape is then applied to each abutting length of Paraflam® to provide a smoke seal and prevent fibre migration.



FSi Promat Paraflam® System

Paraflam® is a perimeter fire stop designed for external facades. Paraflam® is a non-combustible stone wool based product with a foil facing which prevents fibre migration and provides an excellent seal. It is designed to reinstate the fire resistance of a compartment, as well as thermal and acoustic performance

FSi Ltd. products are manufactured to rigid standards of quality. No liability can be accepted for the information provided in this document although it is published in good faith and believed to be correct at time of issue. Any drawings provided are for illustrative purposes only. FSi Ltd. reserves the right to alter product specifications without prior notice, in line with our Company policy of continuous development and improvement. Changes due to new findings are possible, errors and misprints are not excluded. No liability whatsoever will be accepted for any loss, damage or injury arising from the use of the information given. FSi Ltd. have no control over the methods of installation, competence of operatives or suitability of site condition. No warranties, expressed or implied, are intended to be given as to the actual performance of the product/system mentioned within this document.

Issue No.	Drawing Reference	Date
1	PARA-009	05/03/2025

TESTED DETAIL

Drawing Title: FSi Paraflam® Cavity Barrier Installed Within A Rivet Fit Facade System

Scale : NTS

Drawn by : FSi Limited

Reviewed by : N/A

FSi Limited  
Westminster Industrial Estate  
Tamworth Road  
Measham  
Leicestershire  
DE12 7DS

