

Technical Details

Supporting Test Data: 503061/R

Test Standard: EN 1366-3:2009

Fire Resistance Performance:

PVC Vent Duct 220 x 90mm

E 120, EI 90 - C/C

Supporting Construction:

Flexible/Rigid Walls \geq 100mm - Insulated

**The supporting construction must meet the fire resistance requirement of the proposed firestopping detail. Supporting construction must be installed and apertures formed in line with manufacturer's guidance*

Service Supports:

\leq 400mm

**Service supports must be appropriately fire resistant*

Installation:

FSi Ltd. recommend installation of FSi Ltd. products is carried out by 3rd party certified installers.

The substrate must be clean, dry, sound and homogeneous, free from oils, grease, dust and loose particles.

Ensure that the aperture and services in question are tested with Flexi-Coat® system. All services and apertures need to be clean and clear of all dust and loose particles. The aperture temperature needs to be at 5°C or above at time of installation. The Flexi-Coat® system must be in the orientation that ensure the lamellas are positioned to allow for compression. For Flexi-Coat® installation, stone wool backing material must be manufactured in accordance with EN 13162: 2001.

Install min. 100mm depth of stone wool (minimum 80kg/m³) with a minimum 20% compression fit between the substrates effectively flush with the upper surface of the floor. Brush or trowel over the stone wool with Flexi-Coat®. Ensure Flexi-Coat® is applied to a minimum DFT (dry film thickness) of 1mm which will require minimum 2.5mm WFT (wet film thickness)

Clean all tools and application equipment with water immediately after use.

Competence records should be kept for all individuals installing this product (s). Installations should be suitably recorded and logged.

Flexi-Coat System installed to 100mm depth of the substrate with a 20mm overlap to all aperture edges and services.

Minimum Separation Between Penetration Services:

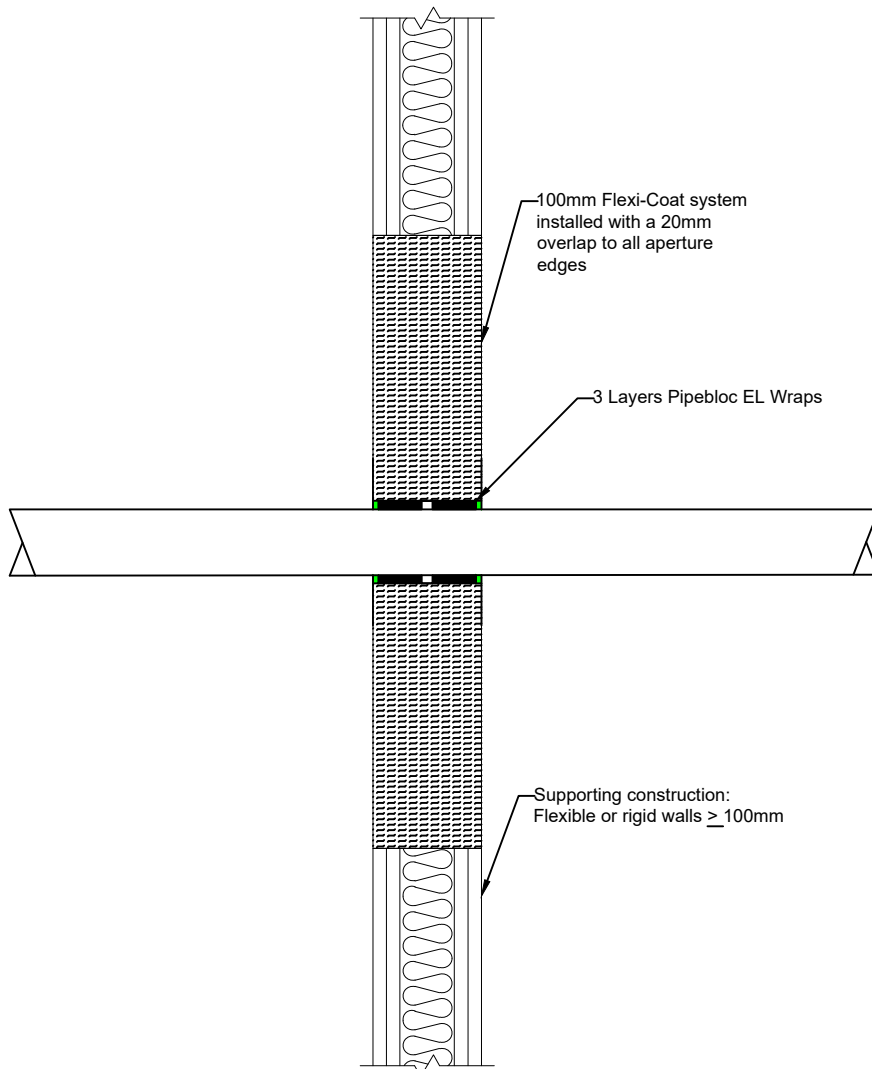
50mm

Maximum Opening Size:

1200 x 730mm

Minimum Distance to Edge:

0mm



TESTED DETAIL

Drawing Title: Flexi-Coat For PVC Duct services in Flexible and Rigid Walls \geq 100mm

Notes :

Service distance to edge must consider the movement requirement of the system prior to installation

Scale : NTS

Drawn by : FSi Limited

Reviewed by : N/A

FSi Limited
Westminster Industrial Estate
Tarnworth Road
Meesham
Leicestershire
DE12 7DS



FSi Ltd. products are manufactured to rigid standards of quality. Any product which has been applied in accordance with FSi Ltd.'s written instructions and in any application recommended by FSi Ltd., but which is proved to be defective in product quality, will be replaced free of charge. No liability can be accepted for the information provided in this document although it is published in good faith and believed to be correct at time of issue. Any drawings provided are for illustrative purposes only. FSi Ltd. reserves the right to alter product specifications without prior notice, in line with our Company policy of continuous development and improvement. Changes due to new findings are possible, errors and misprints are not excluded. No liability whatsoever will be accepted for any loss, damage or injury arising from the use of the information given.

FSi Ltd. have no control over the methods of installation, competence of operatives or suitability of site conditions, no warranties, expressed or implied, are intended to be given as to the actual performance of the product/system mentioned within this document.

Issue No.	Drawing Reference	Date
01	FLEX-015P	29/03/2022