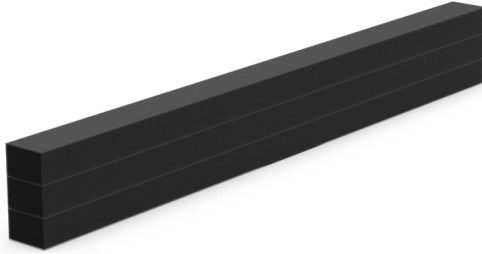


Stopseal® LJS

Fire Resistant Linear Joint Sealing System



General description

Stopseal® LJS is an intumescent thermoplastic filled with flame retardants and binders which provide a high-performance volume expansion and pressure seal situated in an elastomeric, acoustic rated foam which allows for high movement. Stopseal LJS is designed to reinstate the fire resistance of wall and floor constructions in linear gap seals.

Packaging

- Boxed, quantity dependant on product size

Application and use

- To reinstate fire resistance through rigid floors
- To reinstate fire resistance through rigid walls
- Linear construction joints

Product Details

Product Details	
Material	Intumescent thermoplastic filled with flame retardants and binders
Finish /Colour	Black
Chemical properties/ COSHH statement	See SDS latest version is available at www.promat.com/en-gb/ or available on request from technical.fsi.uk@etexgroup.com
Size/dimensions (product & installation spacial requirement)	LJS25FP - 1000mm x 33.6mm x 50mm LJS35FP - 1000mm x 55.4mm x 50mm LJS50FP - 1000mm x 60.4mm x 50mm LJS75FP - 1000mm x 92.2mm x 50mm LJS100FP - 1000mm x 129mm x 100mm
Chemical Resistance / Limitations	Not to be used where joints are to be constantly immersed in water. Do not use on substrates that are likely to release solvents, oils or plasticizers. Not resistant to water, strong acids, strong bases, oxidizing agents (i.e. hydrogen peroxide), alcohols, hydrocarbon solvents.

Technical Data Sheet

Product Certification / Approvals

Approval	Reference number
Ecode	EC 1+
ISO 9001	11378

Memberships

ASFP

BASA

Testing / Classification

Standard	Description	Result
EN1366-4 : 2021	Fire resistance tests for service installations - Part 4: Linear joint seals	Please contact Technical.FSi.UK@etexgroup.com for further details.

Fire Resistance Classifications

Product Reference	Joint Width (mm)	Rigid Walls (Vertical Linear Joint)	Rigid Floors
LJS25FP	10-25	E 240, EI 120	EI 120
LJS35FP	26-35	E 240, EI 120	EI 120
LJS50FP	36-50	E 240, EI 120	EI 120
LJS75FP	51-75	EI 90	E 90, EI 60
LJS100FP	76-100	EI 120	E 120, EI 90

Technical Data Sheet

Installation & Operation

FSi Ltd. recommend installation of FSi Ltd. products is carried out by 3rd party certified installers.

The substrate must be clean, dry, sound and homogeneous, free from oils, grease, dust and loose particles. The product does not require a primer on most common surfaces, although adhesion tests are recommended prior to full scale application.

Adequate space and accessibility should be provided for installation of suitable Stopseal LJS system.

Appropriate Stopseal LJS product size must be selected depending on the gap size. Stopseal LJS system can accommodate linear joints to a maximum width of 100mm.

LJS25FP 10mm to 25mm joint size
LJS35FP 26mm to 35mm joint size
LJS50 36mm to 50mm joint size
LJS75 51mm to 75mm joint size
LJS100 76mm to 100mm joint size

Compress Stopseal LJS between fingers and press into place. Slide in to place to ensure a snug fit to the surrounding building element. Ensure that core recovers and edge of the seal is flush with the face of the joint. Lengths can be cut easily with a Stanley knife to give correct fitting length. Abutting lengths must be positioned tightly together so there are no gaps. Competence records should be kept for all individuals installing this product (s). Installations should be suitably recorded and logged.

Maintenance

Recorded inspection should be conducted in line with the maintenance and inspection schedule defined for the building/project. These inspections should be completed and recorded by suitably competent individuals at intervals outlined in the operation and maintenance manual relevant to the building.

Ensure Safe Access and Egress when carrying out maintenance or inspection.

Where product (s) is damaged or tampered, new product should be installed in line with installation guidance

Handling & Storage

For unopened material, store in a well-ventilated, dry, cool environment. Recommended temp ranges +5°C - +35°C. Protect against exposure to direct sunlight. Always ensure that safe manual handling procedures are followed at all times.

For information and advice on the safe handling, storage and disposal of chemical products, please refer to the most recent Safety Data Sheet (SDS) available at www.promat.com/en-gb

Technical Data Sheet

Disposal

The Stopseal LJS is considered a complex article. The individual components may be separated by mechanical means; however, they are currently unable to be recycled.

Stopseal LJS

European Waste Catalogue code: **17 09 04**

(CONSTRUCTION AND DEMOLITION WASTES (INCLUDING EXCAVATED SOIL FROM CONTAMINATED SITES); other construction and demolition wastes; mixed construction and demolition wastes other than those mentioned in 17 09 01, 17 09 02 and 17 09 03.)

Disposal of Stopseal LJS must be in accordance with a licensed collectors sorting instructions. Avoid the formation of dust during the removal or disposal of this product.

You must classify your own waste, the information given above is guidance only. Waste must be classified on a case-by-case basis.

Please see SDS for more information.

Legal Notes

FSi Ltd. products are manufactured to rigid standards of quality. Any product which has been applied in accordance with FSi Ltd.'s written instructions and in any application recommended by FSi Ltd., but which is proved to be defective in product quality, will be replaced free of charge. No liability can be accepted for the information provided in this document although it is published in good faith and believed to be correct at time of issue. Any drawings provided are for illustrative purposes only. FSi Ltd. reserves the right to alter product specifications without prior notice, in line with our Company policy of continuous development and improvement. Changes due to new findings are possible, errors and misprints are not excluded. No liability whatsoever will be accepted for any loss, damage or injury arising from the use of the information given. FSi Ltd. have no control over the methods of installation, competence of operatives or suitability of site conditions, no warranties, expressed or implied, are intended to be given as to the actual performance of the product/system mentioned within this document.

SKU CODES	
Item Code	Size
LJS25FP	1000mm x 33.6mm x 50mm
LJS35FP	1000mm x 55.4mm x 50mm
LJS50FP	1000mm x 60.4mm x 50mm
LJS75FP	1000mm x 92.2mm x 50mm
LJS100FP	1000mm x 129mm x 100mm