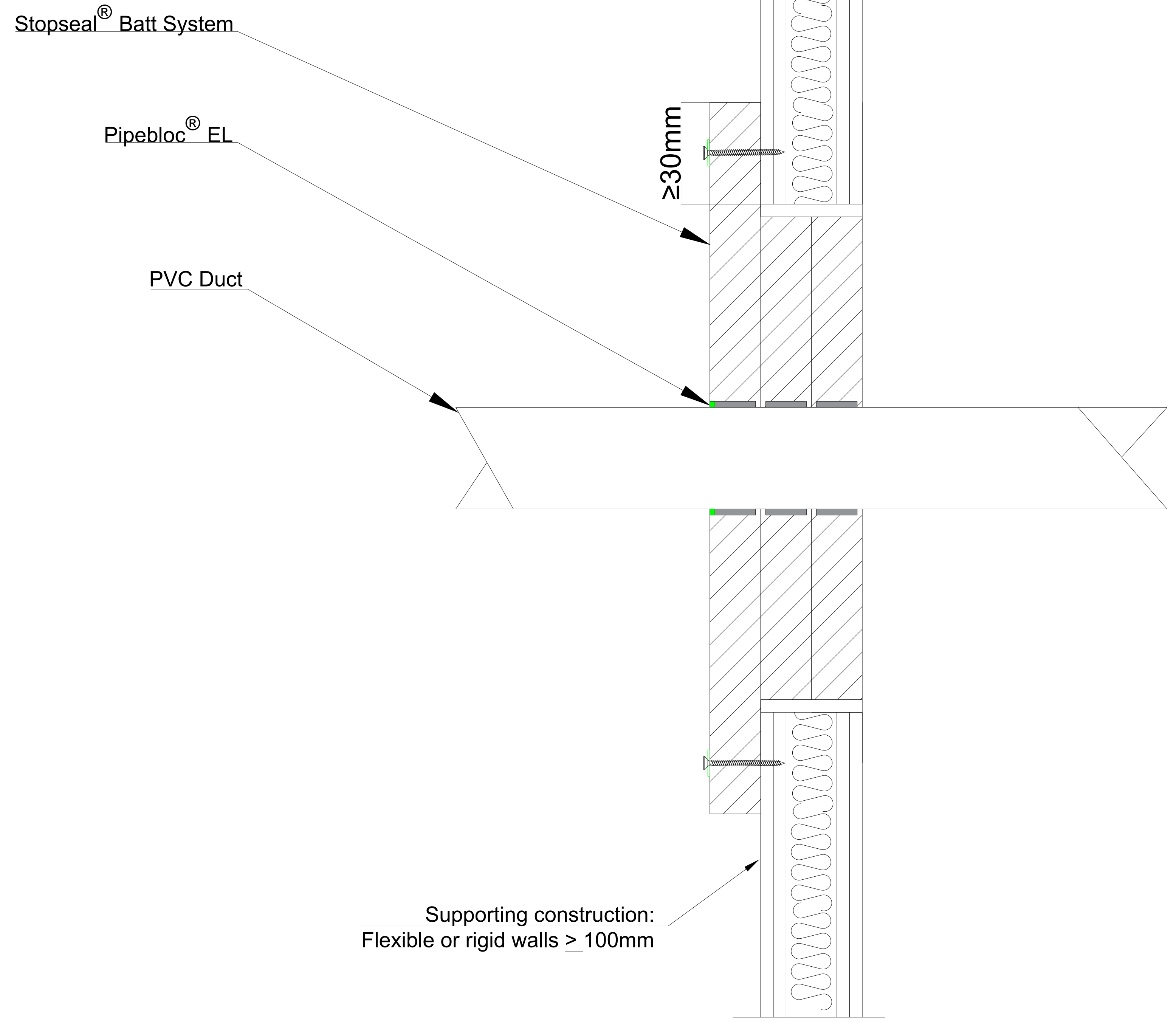


# SIDE OF INSTALLATION



### Technical Details

**Supporting Test Data:**

WF546050

**Test Standard:**

EN 1366-3

**Fire Resistance Performance:**

220 x 90mm PVC Duct Penetration - 2x Layers Pipebloc EL	EI 90 - U/U
---	-------------

**Supporting Construction:**

Flexible walls > 100mm - Framed and Lined  
 \*The supporting construction must meet the fire resistance requirement of the proposed firestopping detail. Supporting construction must be installed and apertures formed in line with manufacturer's guidance

**Service Supports:**

< 400mm  
 \*Service supports must be appropriately fire resistant

**Installation:**

Measure the size of the opening, relevant position and size of the services. Tape all surfaces where necessary to ensure the aesthetics of Pyrocoustic<sup>®</sup> Sealant. Draw these details onto the Stopseal<sup>®</sup> Batt and cut out using a saw or knife. Using a trowel or pallet knife apply a thick layer of Pyrocoustic<sup>®</sup> Sealant to all areas of contact around the opening and services. Apply a similar thickness of Pyrocoustic<sup>®</sup> Sealant to the cut Stopseal<sup>®</sup> Batt. Fit the cut Stopseal<sup>®</sup> Batt into the opening, ensuring a tight friction fit. Push the Stopseal<sup>®</sup> Batt firmly into the opening using the flat of the hand. Continue the above procedure to fill the opening ensuring that a layer of Pyrocoustic<sup>®</sup> Sealant is applied to all areas of contact between the boards. The seal should be made up from as few pieces of Stopseal<sup>®</sup> Batt as practicable. Any small gaps in the seal left when all cut pieces have been installed should be tightly packed with off-cuts and coated with Pyrocoustic<sup>®</sup> Sealant. A layer of Pyrocoustic<sup>®</sup> Sealant should be applied to all joint lines formed by piecing the seal together. An Additional Pattress Fit Stopseal<sup>®</sup> Batt should be applied to the accessible face of the seal with a minimum overlap of 30mm. To complete the installation a small bead of Pyrocoustic<sup>®</sup> Sealant should be applied around the extremities of the opening and services. The bead of Pyrocoustic<sup>®</sup> Sealant should be smoothed to overlap the wall / floor surface by approximately 5mm. Remove any masking and dispose of waste materials.

Peel of self adhesive strip. Start to wrap Pipebloc EL around the service ensuring enough layers in line with scope of test data, use self-adhesive to secure. Push into aperture or in line with aperture.

**Penetration Service Details:**

See 'Fire resistance performance' above

**Minimum Separation Between Services of the Same Type:**

50mm

**Minimum Separation to edge:**

0mm

**Maximum Opening Size:**

800mm x 300mm

Issue No.	Drawing Reference	Date
01	STOP-086	11/03/2025

**TESTED DETAIL**

Drawing Title: Stopseal<sup>®</sup> Batt system installed to PVC Ventilation Duct penetrations through a flexible wall construction for single sided access.

Scale : NTS

Drawn by : FSI Limited

Reviewed by : N/A

FSI Limited  
 Westminster Industrial Estate  
 Tamworth Road  
 Measham  
 Leicestershire  
 DE12 7DS



FSI Ltd. products are manufactured to rigid standards of quality. No liability can be accepted for the information provided in this document although it is published in good faith and believed to be correct at time of issue. Any drawings provided are for illustrative purposes only. FSI Ltd. reserves the right to alter product specifications without prior notice, in line with our Company policy of continuous development and improvement. Changes due to new findings are possible, errors and misprints are not excluded. No liability whatsoever will be accepted for any loss, damage or injury arising from the use of the information given. FSI Ltd. have no control over the methods of installation, competence of operatives or suitability of site condition. No warranties, expressed or implied, are intended to be given as to the actual performance of the product/system mentioned within this document.